

3-phase AC drive system

Outstanding ergonomics with multi-functional tiller head

Operation with tiller in upright position using the crawl speed button

Compact and manoeuvrable

Integrated charger with 13 Amp plug socket for easy charging

Gentle load depositing through gentle lowering (optional)



EMC 110 /B10

Electric pedestrian stacker (1,000 kg)

The Jungheinrich electric pedestrian stacker EMC 110/EMC B10 combines productivity, user-friendly controls and safety for the operator. It offers a wide array of options for almost any application. Two of the best examples are placing goods in racking and feeding machines. Palletised goods are simply raised to the required picking height. Then they can be deposited into the racking or removed from the pallet without placing stress on the operator's back.

Ergonomic and engineering advantages make the EMC especially easy to operate: The long tiller provides the operator with low operating forces and a high safety factor at the same time. The sensitive 2-stage lowering function (optional) ensures gentle depositing of speciality delicate materials on the racking or floor.

All drive and lift functions are easily accessible from the multi-

functional tiller head without having to reach around. The creep speed button allows the truck to operate even in very confined spaces with the tiller upright.

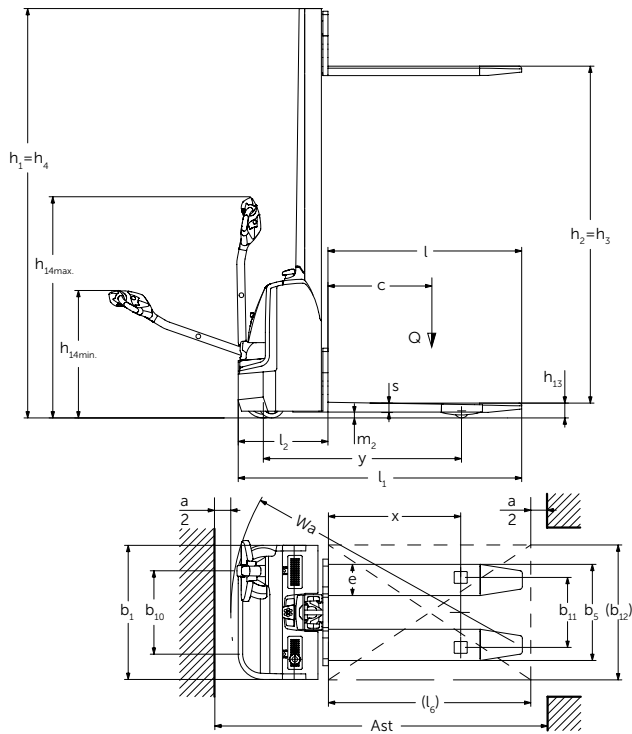
The EMC also offers impressive features for easy power management: The maintenance-free 70 ah batteries can be recharged simply by connecting the integrated charger into any 13 Amp plug socket. The battery discharge indicator continually displays the batteries state of charge.

The innovative 3 phase AC drive motor gives outstanding performance in this truck class and creates ideal conditions for efficient, productive work.

The EMC B10 is also capable of lifting perimeter based pallets and can also be fitted with an FEM / ISO fork carriage. A wide selection of attachments can be mounted on the fork carriage, further expanding the already broad range of applications.

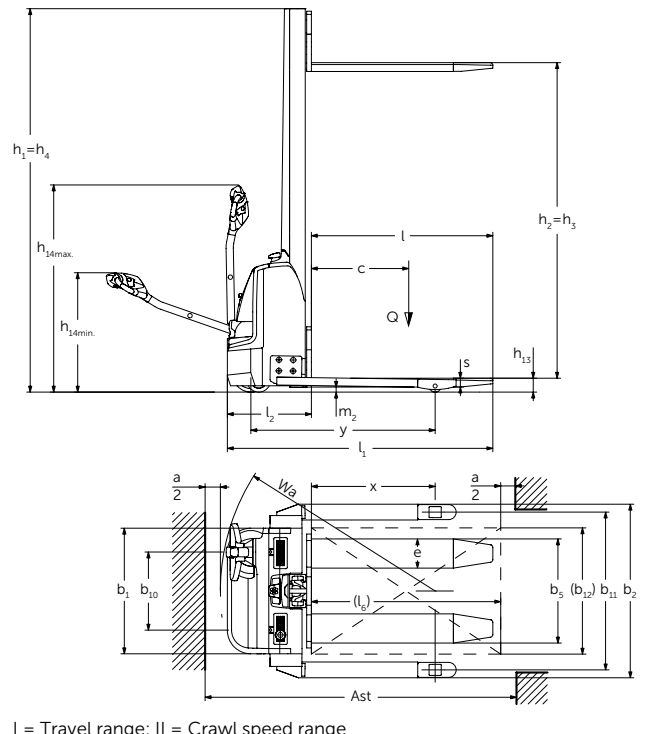
EMC 110 /B10

EMC 110



I = Travel range; II = Crawl speed range

EMC B10



I = Travel range; II = Crawl speed range



Technical data in line with VDI 2198

Identification	1.1	Manufacturer (abbreviation)		Jungheinrich	
	1.2	Model		EMC 110	EMC B10
	1.3	Drive		Electric	
	1.4	Manual, pedestrian, stand-on, seated, order picker operation		Pedestrian/tiller	
	1.5	Load capacity/rated load	Q t	1	
	1.6	Load centre distance	c mm	600	
	1.8	Load distance	x mm	784	
	1.9	Wheelbase	y mm	1,168	
	Weights	2.1.1	Net weight incl. battery (see row 6.5)	kg	490
2.2		Axle load with load front/rear	kg	500 / 990	530 / 1,005
2.3		Axle load without load front/rear	kg	350 / 140	390 / 145
Wheels / frame	3.1	Tyres		PU / Pevopur	
	3.2	Tyre size, front	mm	Ø 230 x 70	
	3.3	Tyre size, rear	mm	Ø 77 x 70 / Ø 77 x 50	Ø 77 x 75 / Ø 77 x 50
	3.4	Additional wheels (dimensions)	mm	Ø 150 x 54	Ø 140x 54
	3.5	Wheels, number front/rear (x = driven wheels)		1x +1/2 or 4	
	3.6	Tread width, front	b ₁₀ mm	510	
	3.7	Tread width, rear	b ₁₁ mm	415	1,000 / 1,170 / 1,370 ⁴⁾
Basic dimensions	4.2	Mast height (lowered)	h ₁ mm	1,970 ³⁾	
	4.3	Free lift	h ₂ mm	1,540 ³⁾	
	4.4	Lift	h ₃ mm	1,540 ³⁾	
	4.5	Extended mast height	h ₄ mm	1,970 ³⁾	
	4.9	Height of tiller in drive position min. / max.	h ₁₄ mm	821 / 1,305	
	4.15	Height, lowered	h ₁₃ mm	88	
	4.19	Overall length	l ₁ mm	1,685	
	4.20	Length to face of forks	l ₂ mm	535	
	4.21	Overall width	b ₁ /b ₂ mm	800	800 / 1,100 ⁴⁾
	4.22	Fork dimensions	s/e/l mm	56 / 185 / 1,150	
	4.25	Width across forks	b ₅ mm	550 / 570	550 / 570 / 660
	4.32	Ground clearance, centre of wheelbase	m ₂ mm	30	40
	4.33	Aisle width for pallets 1000 x 1200 sideways	Ast mm	1,945 ²⁾	
4.34	Aisle width for pallets 800 x 1200 lengthways	Ast mm	1,995 ¹⁾		
4.35	Turning radius	W _a mm	1,378		
Performance data	5.1	Travel speed, laden/unladen	km/h	4.2 / 5	
	5.2	Lift speed, laden/unladen	m/s	0.09 / 0.16	
	5.3	Lowering speed, laden/unladen	m/s	0.12 / 0.13	
	5.7	Gradeability laden/unladen	%	3.5 / 15	
	5.10	Service brake		regenerative	
Electrics	6.1	Drive motor, output S2 60 min.	kW	0.5	
	6.2	Lift motor rating at S3 10%	kW	1.5	
	6.3	Battery as per DIN 43531 /35/36 A, B, C, no		no	
	6.4	Battery voltage/nominal capacity K5	V/Ah	2x 12 / 70	
	6.5	Battery weight	kg	63	
	6.6	Energy consumption according to VDI cycle	kWh/h	0.55	
Misc.	8.4	Sound pressure level at operator's ear as per EN 12053	dB (A)	70	

¹⁾ Diagonal as per VDI: + 160 mm

²⁾ Diagonal as per VDI: + 272 mm

³⁾ High mast version: + 460 mm

⁴⁾ Support arm available in three levels

Benefit from the advantages



Use as lifting table for loading with ease



New 2" enlarged truck display



EMC B10 with FEM / ISO fork carriage (optional)

Safe and comfortable stacking and retrieval

All lifting and lowering functions are easily controlled from the multi-functional tiller head, allowing the operator to focus entirely on stacking and retrieval. Further features make stacking and retrieval particularly safe and productive:

- Precise and gentle depositing of loads into the racking or on the floor. The lowering speed is electro-hydraulically controlled (in 2 stages) sensitively by button on the tiller head (optional).
- High lifting speed increases productivity.
- Automatic regulation of the lift height with intelligent lift positioning (optional).

Working in very confined spaces

The EMC is an especially compact pedestrian stacker. The particularly short chassis length and low weight allow for use in extremely confined spaces, in the lift and on mezzanines. The EMC is also equipped with a crawl speed button. A

press of the button is all that's needed for the EMC to manoeuvre safely, even with the tiller upright.

Working ergonomically

The recently developed tiller head is perfectly adapted to the ergonomic needs of the operator:

- Colour scheme for intuitive operation and buttons with wear-resistant icons.
- Grip angle to suit the hand position of the operator.
- Rocker switch for consistently good operation in all tiller positions.
- Horn button placed in the centre of the tiller where it can be reached quickly.

Wide track version of EMC B10

- Ideal for lifting perimeter based pallets.
- Use of attachments (e. g. cranehooks or barrel turners) with optional FEM / ISO fork carriage.

Lower maintenance costs

Service-friendly components ensure lower maintenance costs in the long-

term:

- Maintenance-free 3 phase drive motor.
- One-piece front cover provides quick access to all components.

Long operating times

The battery, when used together with the energy-saving 3 Phase system, gives long operating times.

- Maintenance-free 24 V / 70 ah batteries (gel fleece).
- Integrated 230 V charger for easy charging at any 13 Amp mains socket.
- Integrated 110 V charger (optional).

Additional equipment

- Tandem load wheels.
- 2" truck display incl. discharge indicator and hour meter and service display.
- EasyAccess PIN-Code for PIN activation (instead of key switch) and automatic switch-off function.
- EasyAccess transponder for access via transponder card.
- FEM / ISO fork carriage with forged forks.

مجموعة الجذور
العربية



Roots Group
ARABIA

Earth Moving and Material Handling Equipment
Jeddah-Al-Nahda Dist-Prince Sultan Str.
Kingdom of Saudi Arabia
P.O. Box 52289 Jeddah 21583
Email kbahaa@arabian-roots.com
Mob +966 590950582
Tel +966 126898628 Ext: 245
Fax +966 126221473

The German production facilities in Norderstedt, Moosburg and Landsberg are certified. ISO 9001 ISO 14001

Jungheinrich fork lift trucks meet European safety requirements.



JUNGHEINRICH
Machines. Ideas. Solutions.