

3-phase AC motor for maximum performance and low energy consumption

Precise load positioning with sensitive lifting and lowering of the load

Crawl speed button for full manoeuvrability with tiller upright

Optimum driving characteristics with fixed ProTracLink torsion bar

Multifunction tiller arm for intuitive operation



EJD 220

Electric pedestrian stacker (2,000 kg)

The EJD 220 is a multi-talented truck when it comes to handling of loads. It combines the features of a pedestrian pallet truck and stacker in one truck: From loading and offloading HGVs to the transporting and stacking of pallets (max. 2560 mm lift height), it really is a convincingly flexible truck.

Its greatest advantage: As a double-deck stacker, it is able to lift two Euro pallets at the same time. All operations can therefore be performed twice as quickly in comparison with a conventional pedestrian pallet truck or stacker. The EJD can carry 2000 kg when used as a pallet truck, 1000 kg with the forks raised or 2 x 1000 kg in double-deck operation.

The EJD is an extremely sturdy and reliable truck. The robust 8-mm frame, the powerful 1.6-kW drive with the latest 3-phase AC technology, batteries up to 375 Ah and lateral exchange as

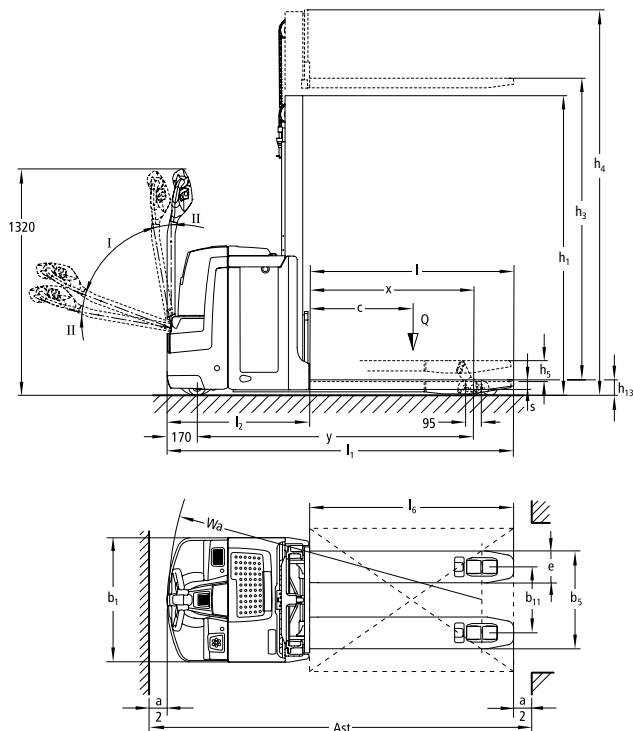
well as the rigid mast ensure extremely efficient operation in even the most demanding environments.

The patented ProTracLink support wheel system with hydraulic locking is an absolute must for ensuring stability and safe travel on ramps and loading platforms.

The raising support arms also contribute to safe travel, for instance on thresholds, ramps and uneven floors. They increase the floor clearance, thereby ensuring simple and safe crossing.

And if space becomes too cramped on HGVs or in narrow aisles, the crawl speed button facilitates safe travel with the tiller in the upright position. Just a touch of the button is sufficient - the brake is released and activation of the travel switch automatically reduces the speed of travel significantly.

EJD 220



I = Travel range; II = Crawl speed range

Standard mast designs EJD 220				
	Lift h_3 (mm)	Lowered mast height h_1 (mm)	Free lift h_2 (mm)	Extended mast height h_4 (mm)
Duplex ZT	1660	1350	100	2150
	2010	1530	100	2500
	2560	1810	100	3050
Triplex DT	2050	1216	100	2540
	2350	1314	100	2840
	2500	1366	100	2990

Technical data in line with VDI 2198

Identification	1.1	Manufacturer (abbreviation)		Jungheinrich
	1.2	Model		EJD 220
	1.3	Drive		Electric
	1.4	Manual, pedestrian, stand-on, seated, order picker operation		pedestrian
	1.5	Load capacity/rated load	Q t	2
	1.5.1	Load capacity/mast lift	Q t	1
	1.5.2	Load capacity/support arm lift	Q t	2
	1.6	Load centre distance	c mm	600
	1.8	Load distance	x mm	957 ³⁾
1.9	Wheelbase	y mm	1,617 ³⁾⁴⁾	
Weights	2.1.1	Net weight incl. battery (see row 6.5)	kg	945
	2.2	Axle load with load front/rear	kg	1,120 / 1,825
	2.3	Axle load without load front/rear	kg	665 / 280
Wheels / frame	3.1	Tyres		PU
	3.2	Tyre size, front	mm	Ø 230 x 70
	3.3	Tyre size, rear	mm	Ø 85 x 95 / Ø 85 x 75
	3.4	Additional wheels (dimensions)	mm	100 x 40
	3.5	Wheels, number front/rear (x = driven wheels)		1x +2/2 or 4
	3.6	Tread width, front	b ₁₀ mm	508
	3.7	Tread width, rear	b ₁₁ mm	385
Basic dimensions	4.4	Lift	h ₃ mm	1,660
	4.6	Initial lift	h ₅ mm	122
	4.9	Height of tiller in drive position min. / max.	h ₁₄ mm	711 / 1,320
	4.15	Height, lowered	h ₁₃ mm	90
	4.19	Overall length	l ₁ mm	2,022 ⁴⁾
	4.20	Length to face of forks	l ₂ mm	832 ⁴⁾
	4.21	Overall width	b ₁ /b ₂ mm	726
	4.22	Fork dimensions	s/e/l mm	56 / 185 / 1,190
	4.25	Width across forks	b ₅ mm	570
	4.32	Ground clearance, centre of wheelbase	m ₂ mm	20
	4.33	Aisle width for pallets 1000 x 1200 sideways	Ast mm	2,233 ²⁾
4.34	Aisle width for pallets 800 x 1200 lengthways	Ast mm	2,243 ¹⁾	
4.35	Turning radius	W _s mm	1,800 ³⁾⁴⁾	
Performance data	5.1	Travel speed, laden/unladen	km/h	6 / 6
	5.2	Lift speed, laden/unladen	m/s	0.14 / 0.25
	5.3	Lowering speed, laden/unladen	m/s	0.25 / 0.25
	5.8	Max. gradeability, laden/unladen	%	9 / 15
	5.10	Service brake		regenerative
Electrics	6.1	Drive motor, output S2 60 min.	kW	1.6
	6.2	Lift motor, output at S3 (on time) 12 %	kW	2
	6.3	Battery as per DIN 43531 /35/36 A, B, C, no		B 43535
	6.4	Battery voltage/nominal capacity K5	V/Ah	24 / 250
	6.5	Battery weight	kg	220
	6.6	Energy consumption according to VDI cycle	kWh/h	0.54
Misc.	8.1	Type of drive control		AC speedCONTROL
	8.4	Sound pressure level at operator's ear as per EN 12053	dB (A)	70

¹⁾ Diagonal in accordance with VDI: + 225 mm

²⁾ Diagonal in accordance with VDI: + 369 mm

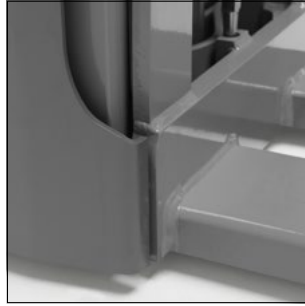
³⁾ Load section lowered: + 48 mm

⁴⁾ With long battery compartment L (375 Ah) + 72 mm

Benefit from the advantages



Double-deck lorry loading



Precise operation with the pallet stop



Perfectly informed with the 2-inch display (optional)



Stacking pallets

Intelligent control and drive technology

Jungheinrich 3-phase AC motors and controllers offer higher performance levels while simultaneously reducing operating costs. Advantages include:

- High level of efficiency with excellent energy management.
- Powerful acceleration.
- No carbon brushes - maintenance-free drive motor.
- Drive motor and controller perfectly matched thanks to in-house production.

Solutions to ensure comfortable working

All lifting and lowering operations are easily controlled by the multifunctional tiller arm. This allows the operator to concentrate fully on stacking and retrieving. Other features that make stacking and retrieving particularly safe and efficient include:

- Precise and gentle lifting of the load by speed-controlled hydraulic motor.
- Gentle depositing of loads using proportional hydraulics.
- Long safety tiller ensures sufficient distance between the operator and the truck.
- Crawl speed button for travelling in restricted spaces with tiller in upright position.

Optimum cornering and stable handling

Sprung and cushioned support wheels – linked via the patented ProTraLink torsion bar – distribute equalising forces dependent on travel conditions i.e. evenly across all wheels during straight-line travel; concentrated on the outer support wheel during cornering. Other advantages:

- Level equalisation ensures minimum support wheel wear when approaching ramps at an angle: The two castor wheels are mechanically linked which keeps them both at the same height, giving the truck high stability. The lower support wheel does not touch the travel lane and is not damaged.

Work in comfort

The EJD is ideally suited for double pallet handling. It has been robustly designed for high performance operation. Other advantages:

- Robust mast: maximum load for support arm lift 2000 kg; for mast lift 1000 kg.
- Outstanding view of the forks over profiled battery cover.
- A support arm stop ensures consistently precise positioning of pallets on the forks.
- High-performance, lift motor copes easily lifting very heavy loads.

- Large detachable storage compartment and clip pad for storage.

Fully informed at all times

The central display and setting instrument offers a complete overview:

- Activation of the truck by EasyAccess via softkey, PinCode or transponder card (optional).
- The 2-inch display provides information on the battery discharge status, number of operating hours, travel speed as well as error codes and offers the option of selecting from three travel programs via softkey (optional).

Long operating times

The energy-saving 3-phase AC technology, combined with battery capacities of up to 375 Ah, ensures long operating times:

- Lateral battery exchange option for rapid replacement in a multi-shift environment.
- Built-in charger (24 V/30 A for wet cell batteries and maintenance-free batteries) for easy charging at any mains socket (optional).
- Innovative lithium-ion batteries up to 360 Ah available (optional).

Optional equipment

- Cold store version
- Load guard.



Earth Moving and Material Handling Equipment
Jeddah-Al-Nahda Dist-Prince Sultan Str.
Kingdom of Saudi Arabia
P.O. Box 52289 Jeddah 21583
Email kbahaa@arabian-roots.com
Mob +966 590950582
Tel +966 126996628 Ext: 245
Fax +966 126221473

The German production facilities in Norderstedt, Moosburg and Landsberg are certified. **ISO 9001**
ISO 14001

Jungheinrich fork lift trucks meet European safety requirements.



JUNGHEINRICH
Machines. Ideas. Solutions.