

Reach mast technology
saves space

Maximum throughput with the
lowest energy consumption

Spacious operators seat

Sensitive handling whilst
driving and lifting

Assistance systems to
adapt trucks to your
specific application



ETV/ETM 214/216

Electric reach truck (1,400/1,600 kg)

Space-saving design, high performance data, innovative technology and optimum ergonomic working conditions. These are the strengths of the Jungheinrich ETM/ETV 214/216 reach trucks. Whether for use in operating in pallet, drive-through or drive-in racking. Whether for extremely narrow areas or low clearances. Whether for single shift or multishift operation: the ETM/ETV 214/216 reach trucks offer the perfect solution for every application.

The main advantages:

- Space saving with narrow aisle widths from 2,711 mm.
- Residual capacities of 1000 kg to more than 10 metres lift height.
- The very latest drive and control technology ensures greater throughput performance whilst at the same time reducing energy consumption.

The advanced ergonomics and technology increase operator productivity thanks to:

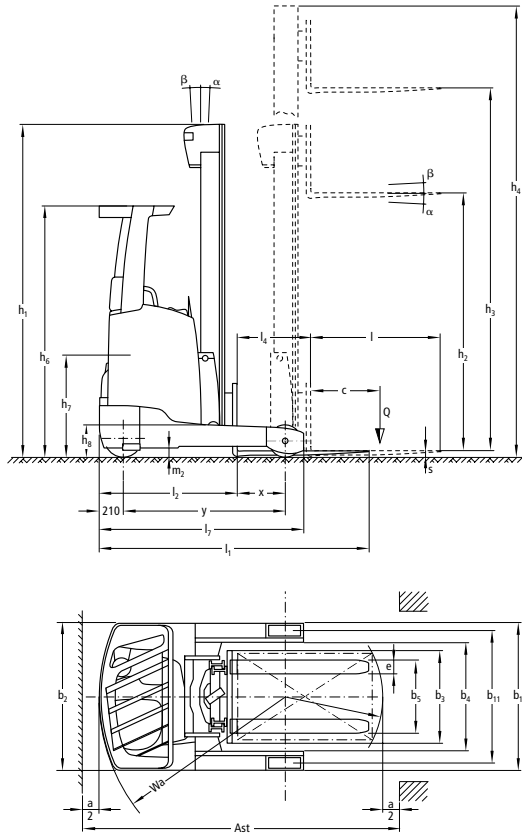
- Outstanding visibility through the panoramic overhead guard both when in motion and when stacking pallets, thanks to the panoramic overhead guard.
- Automotive layout of pedals.
- curveCONTROL – automatic speed reduction when cornering.

180° and 360° steering: for selecting between minimum turning radius and fastest change to travel direction. The steering wheel spinner knob is always positioned at the ergonomically optimum 9 o' clock position when driving in a straight line.

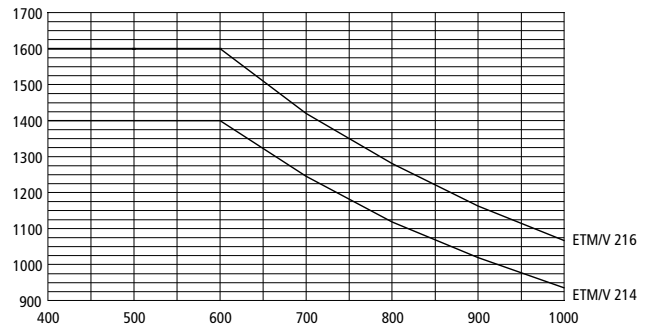
soloPILOT control lever: for sensitive stacking, even at high lift heights.

The right configuration for your needs: an extensive catalogue of options with a wide variety of assistance systems and battery versions from 465 to 775 Ah ensures the truck can be adapted to suit any application.

ETV/ETM 214/216



Capacity (kg)



Load centre distance "c" in mm

ETM 214/ETV 214/ETM 216/ETV 216 standard mast versions						
Designation	Lift h_3 (mm)	Closed mast height h_1 (mm)	Free lift h_2 (mm)	Extended mast height h_4 (mm)	Mast tilt forward / back a/β (°)	Fork tilt forwards/ backwards ¹⁾ a/β (°)
Triplex DZ	4550	2050	1406	5194	1/5	-
	5000	2200	1556	5644	1/5	2/5
	5300	2300	1656	5944	1/5	2/5
	5600	2400	1756	6244	1/3	2/5
	5900	2500	1856	6544	1/3	2/5
	6200	2600	1956	6844	1/3	2/5
	6500	2700	2056	7144	0,5/2	2/5
	6800	2800	2156	7444	0,5/2	2/5
	7100	2900	2256	7744	0,5/2	2/5
	7400	3000	2356	8044	0,5/1	2/5
	7700	3100	2456	8344	0,5/1	2/5
	8000	3200	2556	8644	0,5/1	2/5
	8300	3300	2656	8944	0,5/1	2/5
	8420	3340	2696	9064	0,5/1	2/5
	8720	3440	2796	9364	0,5/1	2/5
	9020	3540	2896	9664	0,5/1	2/5
	9410	3670	3026	10054	-	2/5
	9920	3840	3196	10564	-	2/5
	10250	3950	3306	10894	-	2/5
	10520	4040	3396	11164	-	2/5
10700	4100	3456	11344	-	2/5	

¹⁾ Fork tilt for ETV series only

Technical data in line with VDI 2198

		Jungheinrich						
			ETM 214	ETV 214	ETM 216	ETV 216		
Identification	1.1	Manufacturer (abbreviation)						
	1.2	Model						
	1.3	Drive	Electric					
	1.4	Manual, pedestrian, stand-on, seated, order picker operation	transverse seat					
	1.5	Load capacity/rated load	Q	t	1.4	1.4	1.6	1.6
	1.6	Load centre distance	c	mm	600			
	1.8	Load distance	x	mm	353 ¹⁾	423 ¹⁾	403 ¹⁾	413 ¹⁾
	1.8.1	Load distance, mast reached forward	x ₁	mm	205			
	1.9	Wheelbase	y	mm	1,410	1,410	1,460	1,460
Weights	2.1.1	Net weight incl. battery (see row 6.5)		kg	2,975	3,000	3,110	3,136
	2.3	Axle load without load front/rear		kg	1,785 / 1,190	1,830 / 1,170	1,835 / 1,275	1,882 / 1,254
	2.4	Axle loading forks forward with load at front / rear		kg	481 / 3,894	572 / 3,828	518 / 4,192	521 / 4,215
	2.5	Axle loading forks retracted with load at front / rear		kg	1,531 / 2,844	1,628 / 2,772	1,649 / 3,061	1,658 / 3,078
Wheels / frame	3.1	Tyres	Vulkollan®					
	3.2	Tyre size, front		mm	Ø 343 x 114			
	3.3	Tyre size, rear		mm	Ø 285 x 100			
	3.5	Wheels, number front/rear (x = driven wheels)			1x / 2			
	3.7	Tread width, rear	b ₁₁	mm	986	1,136	986	1,136
Basic dimensions	4.1	Tilt of mast/fork carriage forward/backward	α/β	°	1/3 ²⁾			
	4.2	Mast height (lowered)	h ₁	mm	2,400			
	4.3	Free lift	h ₂	mm	1,756			
	4.4	Lift	h ₃	mm	5,600			
	4.5	Extended mast height	h ₄	mm	6,244			
	4.7	Height of overhead guard	h ₆	mm	2,190			
	4.8	Seat height/stand height	h ₇	mm	1,057			
	4.10	height of support arms	h ₈	mm	285 ⁶⁾			
	4.19	Overall length	l ₁	mm	2,418 ¹⁾	2,346 ¹⁾	2,418 ¹⁾	2,408 ¹⁾
	4.20	Length to face of forks	l ₂	mm	1,268 ¹⁾	1,198 ¹⁾	1,268 ¹⁾	1,258 ¹⁾
	4.21	Overall width	b ₁ /b ₂	mm	1,120 / 1,120	1,270 / 1,270	1,120 / 1,120	1,270 / 1,270
	4.22	Fork dimensions	s/e/l	mm	40 / 120 / 1,150			
	4.23	Fork carriage ISO 2328, class/type A, B			2B			
	4.24	Fork carriage width	b ₃	mm	830			
	4.25	Width across forks	b ₅	mm	335 / 560	335 / 730	335 / 560	335 / 730
	4.26	Width between support arms/loading surfaces	b ₄	mm	780	940	780	940
	4.28	Mast reach	l ₄	mm	558 ¹⁾	628 ¹⁾	608 ¹⁾	618 ¹⁾
	4.32	Ground clearance, centre of wheelbase	m ₂	mm	80			
	4.32.1	Ground clearance at lowest point		mm	30			
4.33	Aisle width for pallets 1000 x 1200 sideways	Ast	mm	2,702 ¹⁾	2,652 ¹⁾	2,716 ¹⁾	2,709 ¹⁾	
4.34	Aisle width for pallets 800 x 1200 lengthways	Ast	mm	2,757 ¹⁾	2,694 ¹⁾	2,762 ¹⁾	2,753 ¹⁾	
4.35	Turning radius	W _a	mm	1,620	1,620	1,670	1,670	
4.37	Length over the support arms	l ₇	mm	1,780	1,780	1,830	1,830	
Performance data	5.1	Travel speed, laden/unladen		km/h	14 / 14 ⁴⁾			
	5.2	Lift speed, laden/unladen		m/s	0.51 / 0.7 ⁵⁾	0.51 / 0.7 ⁵⁾	0.48 / 0.7 ⁵⁾	0.48 / 0.7 ⁵⁾
	5.3	Lowering speed, laden/unladen		m/s	0.55 / 0.55			
	5.4	Traverse speed w. / w.o. load		m/s	0.24 / 0.24 ⁵⁾			
	5.7	Gradeability laden/unladen		%	9 / 13	9 / 13	8 / 12	8 / 12
	5.8	Max. gradeability, laden/unladen		%	10 / 15			
	5.9	Acceleration time w. / w.o. load		S	4.6 / 4.3 ⁴⁾			
	5.10	Service brake			electric			
	Electrics	6.1	Drive motor, output S2 60 min.		kW	8.5 ⁴⁾		
		6.2	Lift motor, output at S3 15%		kW	15.5 ⁵⁾		
6.3		Battery as per DIN 43531 /35/36 A, B, C, no			DIN 43531 - B	DIN 43531 - C	DIN 43531 - B	DIN 43531 - C
6.4		Battery voltage/nominal capacity K5		V/Ah	48 / 465			
6.5		Battery weight		kg	750			
6.6		Energy consumption according to VDI cycle		kWh/h	3.4 ³⁾	3.4 ³⁾	3.6 ³⁾	3.6 ³⁾
6.7		Throughput		t/h	64 ³⁾	64 ³⁾	73 ³⁾	73 ³⁾
6.8		Energy consumption at max. throughput		kWh/h	3.7 ³⁾	3.7 ³⁾	3.8 ³⁾	3.8 ³⁾
Misc.	8.1	Type of drive control			Mosfet / AC			
	8.2	Working pressure for attachments		bar	150			
	8.3	Oil flow for attachments		l/min	20			
	8.4	Sound pressure level at operator's ear as per EN 12053		dB (A)	68			

¹⁾ different battery sizes change these values

²⁾ mast-dependent

³⁾ With drive&liftPLUS options package

⁴⁾ With Drive Plus options package

⁵⁾ With liftPLUS options package

⁶⁾ With load wheel cover: + 30 mm

Benefit from the advantages



Ergonomic cab



Unobstructed visibility thanks to panorama roof



soloPILOT

High-performance mast

Jungheinrich masts guarantee maximum safety and space utilisation to high lift heights.

- Triplex masts with lifting heights up to 10,700 mm.
- Excellent visibility to the load.
- Lowest clearances at high lift heights.
- High residual capacities even at high lift heights.
- Patented mast -reach cushioning (optional).
- Energy recovery through patented regenerative lowering (optional).

Ergonomic cab

The comfort of the operator's seat provides the ideal working conditions for maximum performance.

- Fabric seat with adjustment options for seating position, backrest and body weight.
- Plenty of storage options.
- Important truck controls are within easy reach.
- Generous space, even for tall operators.
- Electric steering (choose 180° or 360° mode). When driving in a straight line, the steering wheel spinner knob is always at the optimum ergonomic position.
- Standard automotive layout of pedals.
- Panoramic overhead guard for an unobstructed view of the raised load (optional).

soloPILOT control lever

- The control lever for activating all hydraulic functions and also selecting the direction of travel and the horn.
- All the controls are within the operator's field of vision and are clearly designated for each specific function.
- Travel direction switch features intuitive direction change.
- Sensitive control of all functions for operating accuracy within millimetres.
- Extra attachments – e.g. a fork positioner (optional) – can be comfortably controlled with the soloPILOT.
- multiPILOT available as option.

Easy-to-read colour display

High-quality control instruments for displaying the most important operating data.

- Display of direction of travel and wheel position.
- Battery status with display of time remaining until the next charging.
- A choice of three travel programs for individual adaptation to any needs.
- Operating hours and time of day.
- Lift height (optional).
- Load weight (optional).
- EasyAccess: Keyless access system via softkey, PIN code or transponder card (optional).

Assistance systems and options

For more power and less load:

- operationCONTROL continuously measures the load weight and compares it with the residual capacity of the truck. When approaching the limit value, an optical warning is triggered on the operator display in conjunction with an acoustic warning.
- positionCONTROL with SNAP function for simple and fast stacking without additional pressing of buttons.
- Warehouse Control transfers stacking orders from the warehouse management system automatically. This prevents stacking errors.
- Anti-slip system ensures more traction on wet or dusty surfaces.
- Fork arm camera with ergonomically adjustable monitor enables safe and efficient stacking and retrieval.

Equipment packages for different operating conditions

- 'Efficiency' for the longest operating time with one battery.
- 'drivePLUS' for applications with frequent long routes.
- 'liftPLUS' for extensive lifting to high lift heights.
- Holder for radio data terminal, writing board or video monitor, for example.



Earth Moving and Material Handling Equipment
Jeddah-Al-Nahda Dist-Prince Sultan Str.
Kingdom of Saudi Arabia
P.O. Box 52269 Jeddah 21563
Email kbahaa@arabian-roots.com
Mob +966 590950582
Tel +966 126996628 Ext: 245
Fax +966 126221473

The German production facilities in Norderstedt, Moosburg and Landsberg are certified. ISO 9001 ISO 14001

Jungheinrich fork lift trucks meet European safety requirements.



JUNGHEINRICH
Machines. Ideas. Solutions.