

High energy efficiency levels
due to maintenance-free
3-phase AC drive motor

Precise control with electric
steering and jetPILOT

Safe cornering with
curveCONTROL

Individual options for an
optimum workstation



EZS 350

Electric tow tractor (5,000 kg)

Robust, versatile and economic: These are the advantages of our EZS 350 electric tow tractor. These high-performance tow tractors are suitable for any application in tow trains with tow loads up to 5 t.

In addition to outstanding ride comfort and safety, our EZS 350 tow tractor also offers increased performance with low energy consumption:

- Optimised handling even in difficult situations.
- curveCONTROL steer-angle-dependent assistance system for stable cornering.
- Easily accessible trailer coupling: From the operator position, the coupling is clearly visible and easy to reach. Different couplings are available.
- Generous and comfortable operator position: The low stand-on platform makes it easy to climb aboard.
- Automatic parking brake with anti roll-back function: When the truck comes to a halt, the tow tractor and trailer are automatically secured.
- Powerful and efficient 3-phase AC motor provides powerful acceleration and high top speed.

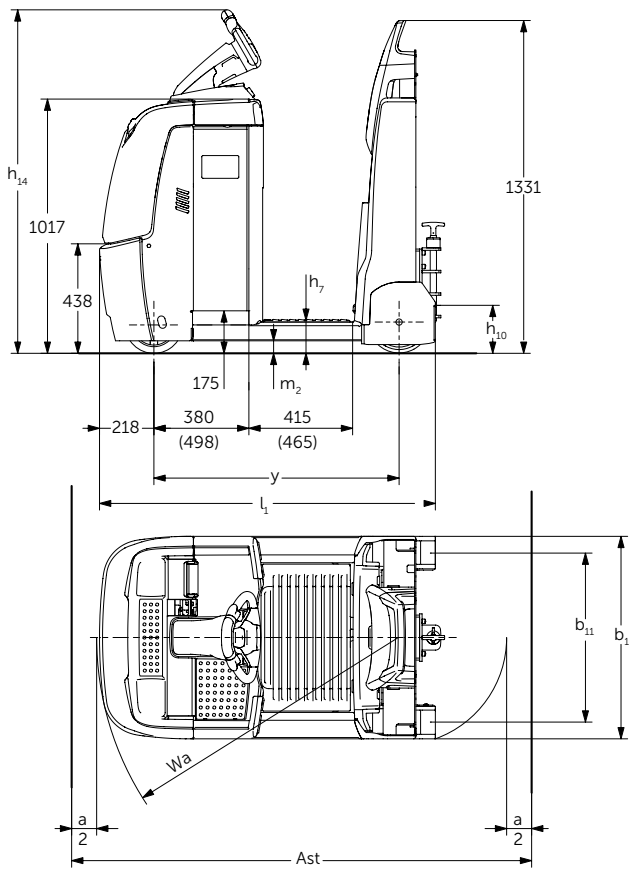
- Regenerative braking: The braking energy is fed back into the battery, thereby extending its operating period.
- The optional LED lighting is environmentally friendly and not sensitive to vibrations.
- Fast battery replacement: The battery can either be lifted out by crane or optionally replaced from the side.
- The comfort features guarantee specific adaptation to all applications.

The jetPILOT multifunctional steering wheel also features:

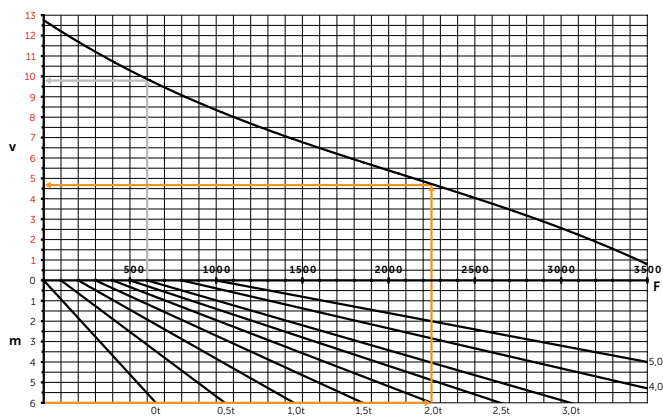
- Intuitive and comfortable operation, similar to a car, plus a safe and secure grip.
- Reduced strain on neck and spinal column when cornering.
- One-handed operation and automatic return of the steering wheel to straight line travel.
- Adjustable to individual body size.

Sophisticated ergonomics and technology in the form of our EZS 350 ensure safe, effortless working combined with cost and energy efficiency.

EZS 350



Pulling ability



v =speed [km/h], m =incline [%], F =drawbar pull [N]

Example:

1. The EZS 350 can operate with a 3 ton load on the level. For this a tractive force of 600 N is required and an approx speed of 9.9 km/h can be achieved.
2. The EZS 350 can operate on a 6 % gradient with a 2 ton load. This requires 2230 N tractive effort and an approx speed of 4.8 km/h can be reached.

Note:

For loads over 1000 N continuous operations not recommend.

Gradients of over 4% - The use of braked trailers is recommend!

Technical data in line with VDI 2198

Identification	1.1	Manufacturer (abbreviation)		Jungheinrich			
	1.2	Model		EZS 350			
				L standard	L Comfort	XL standard	XL comfort
	1.3	Drive		Electric			
	1.4	Manual, pedestrian, stand-on, seated, order picker operation		stand-on			
Weights	1.5	Load capacity/rated load	Q t	5			
	1.7	Rated tractive power	F N	1,000			
	1.9	Wheelbase	y mm	980	1,030	1,098	1,148
	2.1.1	Net weight incl. battery (see row 6.5)	kg	996	1,006	1,091	1,101
	2.3	Axle load without load front/rear	kg	505 / 491	510 / 496	565 / 526	570 / 531
Wheels / frame	3.1	Tyres		Vu/Su			
	3.2	Tyre size, front	mm	ø230 x 77			
	3.3	Tyre size, rear	mm	ø250 x 80			
	3.5	Wheels, number front/rear (x = driven wheels)		1x/2			
	3.7	Tread width, rear	b ₁₁ mm	680			
Basic dimensions	4.8.1	Standing height	h ₇ mm	125			
	4.9	Height of tiller in drive position min. / max.	h ₁₄ mm	1,374 ¹⁾			
	4.12	Coupling height	h ₁₀ mm	158 ²⁾			
	4.19	Overall length	l ₁ mm	1,350 ⁵⁾	1,400 ⁵⁾	1,468 ⁵⁾	1,518 ⁵⁾
	4.21	Overall width	b ₁ /b ₂ mm	810			
	4.32	Ground clearance, centre of wheelbase	m ₂ mm	50			
Performance data	4.35	Turning radius	W _a mm	1,220	1,270	1,338	1,388
	5.1	Travel speed, laden/unladen	km/h	8 / 12.5 ⁴⁾			
	5.5	Drawbar pull w. / w.o. load	N	1,000 ³⁾			
	5.6	Max. drawbar pull, laden/unladen	N	3,700			
	5.10	Service brake		regenerative			
Electrics	6.1	Drive motor, output S2 60 min.	kW	2.8			
	6.3	Battery as per DIN 43531 /35/36 A, B, C, no		no			
	6.4	Battery voltage/nominal capacity K5	V/Ah	24 / 465	24 / 465	24 / 620	24 / 620
	6.5	Battery weight	kg	370	370	460	460
Misc.	8.1	Type of drive control		AC speedCONTROL			
	8.4	Sound pressure level at operator's ear as per EN 12053	dB (A)	66			

¹⁾ jetPILOT height

²⁾ Other coupling heights available

³⁾ Rated tractive power

⁴⁾ See diagram

⁵⁾ Total length without coupling, as different coupling systems are available

In accordance with VDI Guideline 2198 this specification sheet provides details of the standard truck only. Non-standard tyres, different masts, optional equipment, etc. may result in different values.

Benefit from the advantages



JetPILOT – exclusive to Jungheinrich



Backrest with folding seat (optional)



Easy entry and exit



Different couplings available (optional)

Powerful and efficient drive concept

- Powerful acceleration and high top speed.
- High level of efficiency with excellent energy management.
- Safe cornering speed thanks to curveCONTROL.
- Energy recovery: Regenerative braking when decelerating.

Comfortable and safe operation

- The balanced frame guarantees traction at all times.
- Different backrests available.
- Additional cushioned stand-on platform (optional).
- Programmable crawl speed button allows travel at reduced speed.
- Three alternative travel programs can be set to suit every specific need.

Rugged construction for the toughest applications

- Impact-resistant steel drive panel.
- High-quality stainless steel skirt raised extra high on the front panel.
- Robust LED lights (optional).

Long operating times

Energy-efficient 3-phase AC technology and high battery capacities allow for long

operating times:

- Different batteries available from 375 to 620 Ah.
- Lateral battery exchange for multi-shift applications (optional).

Complete overview provided by central display and clear instruments

- Activation of the truck by EasyAccess via softkey, PIN code or transponder card (optional).
- The 2-inch display provides information on the battery discharge status, number of operating hours, travel speed as well as error codes and offers the option of selecting from three travel programs via softkey (optional).

All the better to see and be seen

- Integrated DayLED daytime running lights for better visibility in poorly lit warehouses (optional).
- Floor-Spot: The risk of collision at blind spots is significantly reduced by a dot of red light projected on the floor approximately 3 m in front of the truck (optional).

Lithium-ion technology

- High level of availability due to extremely short charging times: With just 30 minutes of intermediate charging the battery charge is at 50%, and is at 100% after 80 minutes.
- No battery replacement required.
- Dielectric strength ensures full performance at all times.
- Cost-saving due to longer service life and low maintenance compared with lead-acid batteries.
- No charging rooms or ventilation required as there is no build up of gas.

Additional equipment

A comprehensive range of accessories allows for individual tailoring to your requirements:

- Different couplings.
- Reverse movement device for simple coupling and decoupling.
- Hydraulic or electric supply connections for Jungheinrich GTE and GTP trailers.
- Sturdy, universally applicable options bracket, e.g. for radio data transmission components.
- Further options for the right configuration of the tow tractor.



Earth Moving and Material Handling Equipment
Jeddah-Al-Nahda Dist-Prince Sultan Str.
Kingdom of Saudi Arabia
P.O. Box 52269 Jeddah 21563
Email kbahaa@arabian-roots.com
Mob +966 590950582
Tel +966 126996628 Ext: 245
Fax +966 126221473

The German production facilities in Norderstedt, Moosburg and Landsberg are certified. **ISO 9001**
ISO 14001

Jungheinrich fork lift trucks meet European safety requirements.



JUNGHEINRICH
Machines. Ideas. Solutions.